

VENUE INFO



CALL DIBS AND WE'RE ALL YOURS
MONDAY THROUGH SUNDAY

EST 2015
CROOKED
spire

IN THE LITTLE OLD TOWN



of Chesterfield, England (1362), the deathly Black Plague swept through cobblestoned streets, killing off most the town's skilled craftsmen. This was bad timing for the town clergy, who'd planned to renovate the church, complete with a pristine spire. With no other option than to leave the construction in the inexperienced hands of locals, they soon realised their mistake.

When the sun shone down on the drying spire, the wet wood and heavy shingles bent and warped, spouting an unusual, twisted appearance. News of "The Crooked Spire" spread far and wide across the country, drawing in crowds desperate to bask in its unique charm and uncanny imperfection. Mirroring society, The Crooked Spire was a perfect accident, acting as a reminder that making mistakes is what makes us special and the essence of who we are.

Fast forward to the 17th century where the Age of Enlightenment had swallowed Europe, with

creatives meeting at coffee houses to share ideas, collaborate and create. In an era where alcohol, a depressant, was replaced by coffee, a stimulant, Europe transcended into a new plane of culture based upon community.

Crossing the Indian Ocean in 2015 to Perth, Crooked Spire Coffee & Art House was born out of a nod to the iconic Crooked Spire of Chesterfield and inspired by the Age of Enlightenment. A beacon of innovation, here you'll find shared tables, quirky staff and an overwhelming sense of community. Be encouraged to interact, connect and laugh with new friends over good coffee, local art and music.

**GOT A SPARE 3 MINUTES & 53
SECONDS? HEAR THE STORY
FROM THE OWNER HIMSELF...**

[CLICK HERE TO LISTEN](#)

LOOKING FOR SOMETHING?

rooms ;

OVERVIEW (4)

THE SPIRE (6)

THE ENLIGHTENMENT (8)

THE CONFESSIONAL (10)

THE REVOLUTION (12)

more goodies ;

AV CAPABILITIES (14)

FREQUENTLY ASKED QUESTIONS (15)

LOCATION (17)

NEXT STEPS (18)

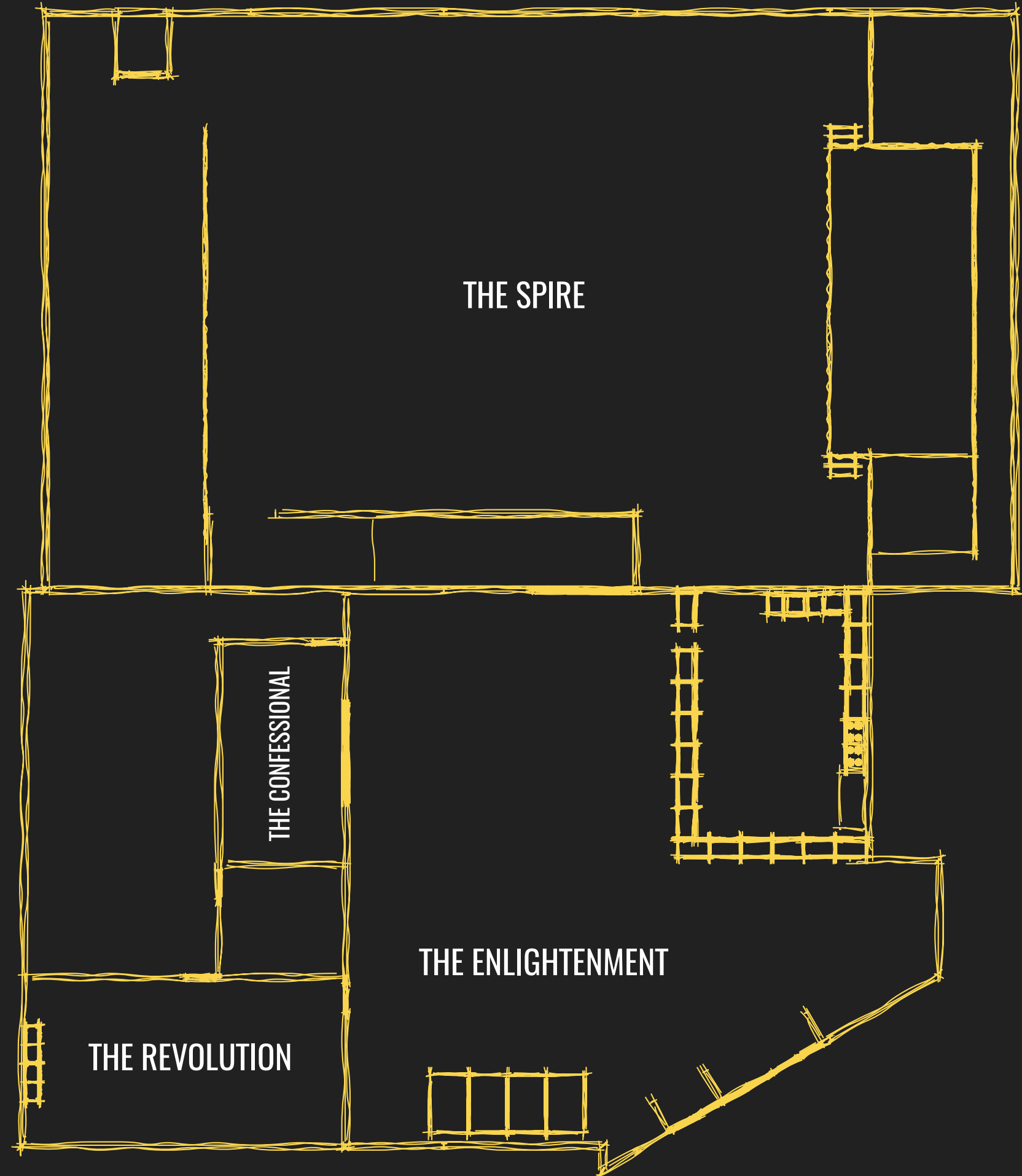


COVID-19 INFORMATION

Please be assured that we are monitoring the COVID-19 situation closely at Crooked Spire, with increased precautions surrounding health and hygiene, ensuring our venue remains minimal risk. This includes continued regular sanitisation of contact areas and equipment, increased hand sanitisation, and compulsory isolation for staff who are feeling unwell. We are gladly complying with restrictions set by our State and Federal governments. Please contact us directly for more information.

OVERVIEW

TALK A WALK THROUGH
OUR VENUE, HERE





THE SPIRE

“THE SPIRE” PROPER NOUN [THE SPY-AH]
A BEACON OF ENERGY AND CELEBRATION

I've been told my finest assets are my peachy posterior, strong lofty frame and my ability to be flexible AF. Tie me up and rig me down with arrangements. Light me from the inside out or outside in and blast your beats 'til morning comes. You may call me a warehouse, but I'm a total blank canvas who's expertly savvy in sound, lighting and vision. Work, play, exercise or worship. Corporate, love, awards or entertainment - with my built in stage, I'm a jack of all trades! Like that friend who's couch you can always crash on, I'm ready to party every single day of the week.



[CLICK TO MORE IMAGES](#)

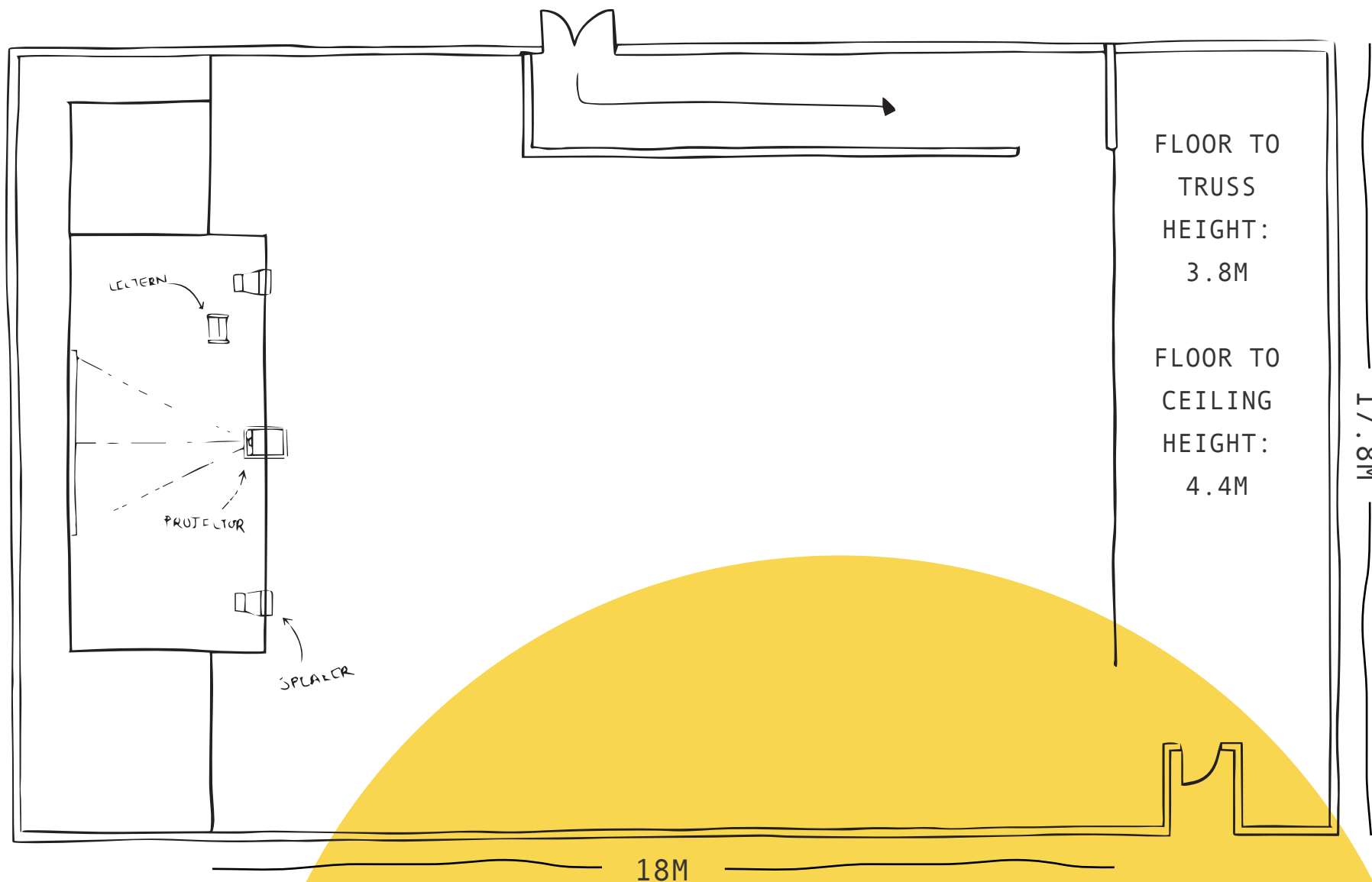
LOCK ME IN FOR YOUR...

LAUNCH EVENT
CORPORATE CONVENTION
SCHOOL OR CHARITY BALL
WEDDING RECEPTION
GROUP FITNESS CLASS
MUSIC OR DANCE PERFORMANCE
STYLED SHOOT
AWARDS NIGHT
SEMINAR
EXHIBITION
OR ANYTHING ELSE...

CAPACITY...

COCKTAIL: 316 PAX
THEATRE: 300 PAX
HALF THEATRE: 100 PAX
BANQUET: 180 PAX
CABERET: 120 PAX
CLASSROOM: 144 PAX

THE SPIRE



What's included:

- State of the art sound system
- Lectern with attached microphone
- Customised technical floor plan
- General stage wash LED front lighting
- Dimmable festoon lighting
- Stage (9.6m wide x 4.4m @ 0.6m H. with 2x steps)
- A/C
- Tech Meet & Greet (up to one hour)
- Polished concrete flooring, carpet tiles available on request
- Post event professional cleaning

PRICE GUIDE

PER HOUR (2 HR MIN)	\$320
HALF DAY (6 HR MAX)	\$1740
FULL DAY (12 HR MAX)	\$3240

[ENQUIRE HERE](#)

THE ENLIGHTENMENT

“THE ENLIGHTENMENT” PROPER NOUN [THE EN-LAI-TUHN-MENT]
A SPACE FULL OF SUPRISSES RADIATING CULTURE AND NATURAL LIGHT

Alive with electric energy from dawn ‘til dusk, my grungy interior oozes local art, the smell of a fresh brew and sinking Chesterfield lounges. My arms stretch around bustling creatives connecting over the latest #AussieIndie release, sharing raw treats or passionately cheering on a mate performing slam poetry on my intimate stage. As the sun sets, my dance card is open, and Midland’s most beloved café (that’s me) is yours. Drip me in warm pendant lights or embrace my festooning. I can turn up the heat for any celebration.



[CLICK TO MORE IMAGES](#)

I’M PERFECT FOR YOUR...

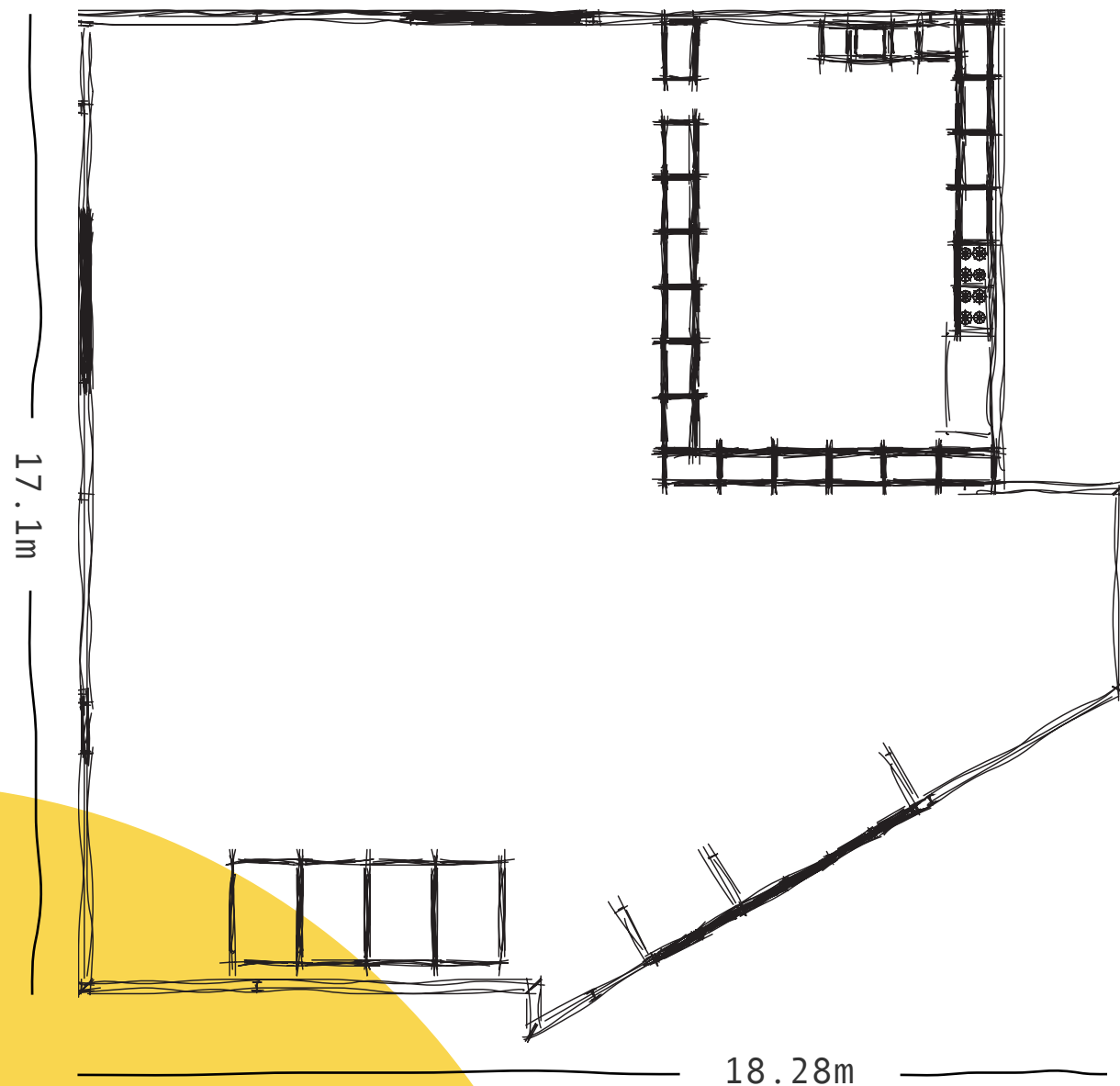
BAND PERFORMANCE
STAND UP COMEDY
POETRY READING
BOOK CLUB
WORKSHOP
WEDDING RECEPTION

COCKTAIL EVENT
COMMUNITY MEETING
STYLED SHOOT
LONG TABLE DINNER
STAFF PARTAY
OR ANYTHING ELSE...

CAPACITY...

COCKTAIL: 110 PAX
THEATRE: 132 PAX
CLASSROOM: 72 PAX
CABARET: 66 PAX
BANQUET: 90 PAX

THE ENLIGHTENMENT



What's included:

- Assorted furniture
- Sound system with AUX connection
- 1x Cordless handheld microphone with stand
- Stage: 2.4mW x 1.8mL x 0.3mH (expandable height)
- Polished concrete flooring
- Tech Meet & Greet
- Post-event professional cleaning

PRICE GUIDE	
PER HOUR (2 HR MIN)	\$290
HALF DAY (6 HR MAX)	\$1560
ENQUIRE HERE	

SPACE AVAILABLE FROM 5PM WEEKDAYS, 2PM WEEKENDS

THE CONFESSIONAL

“THE CONFESSIONAL” PROPER NOUN [THE KON-FESH-EN-AL]
A SPACE TO SPEAK YOUR MIND WITH NO JUDGEMENT

Inspired by extroverted meetings of the mind, I'm a windowed hub built for dreamers, thinkers and doers, who like to be seen but not heard. Litter my tables with whimsical ideas as latte aromas and dreams drift upon the air. Within my fresh, clean lines and glass windows, you can ponder the café customers as they come and go, secretly fuelling your inspiration or procrastination. My studio-like space offers that little extra exclusivity when you need to study hard, work hard or laugh hard among friends.



BOOK ME FOR YOUR...

HOT DESK
GROUP STUDY
WORKSHOP
BRAINSTORM
PODCAST

SMALL MEETING
INTERVIEW
TRAINING
BOOK CLUB
OR ANYTHING ELSE...

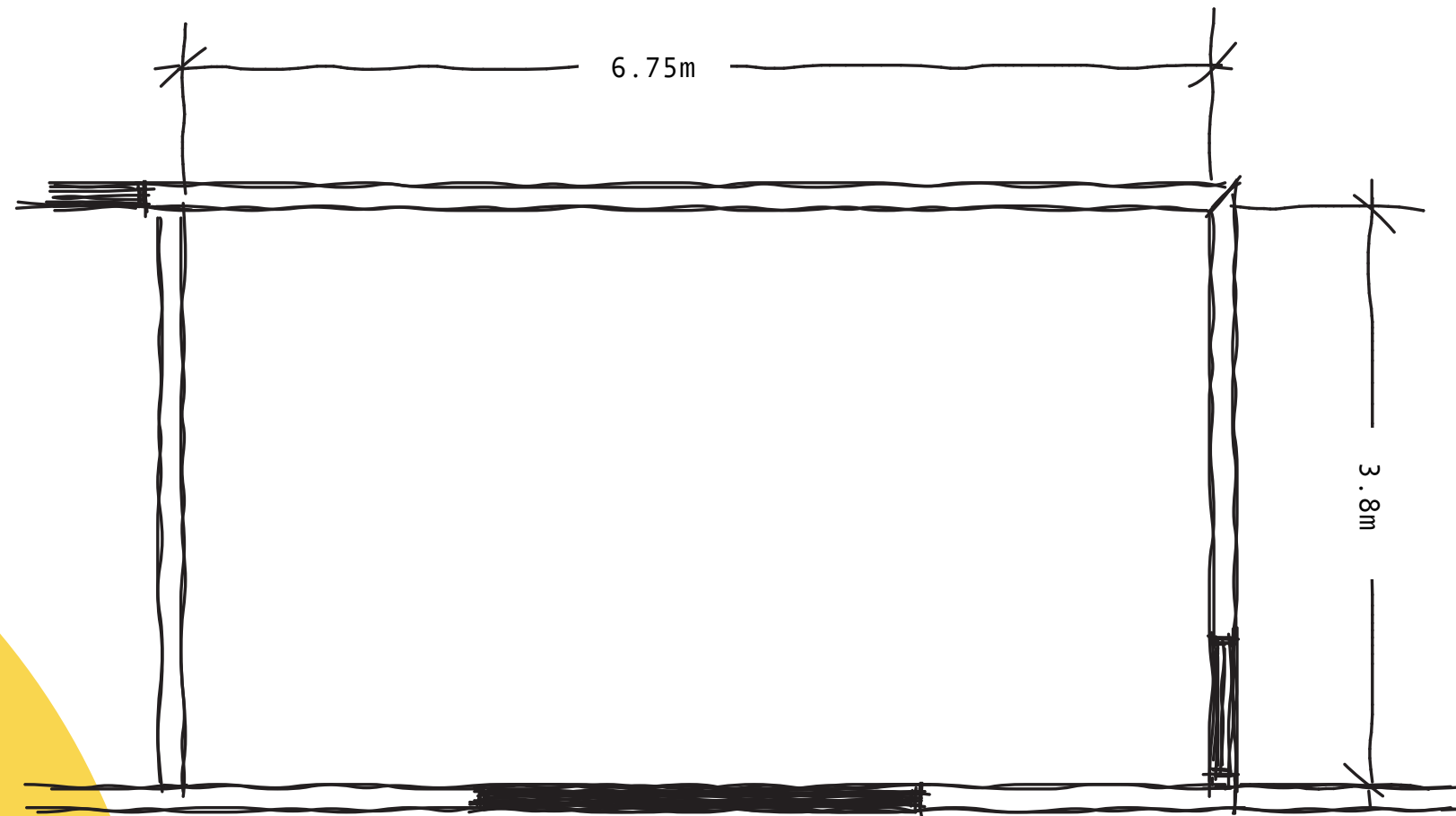
CAPACITY...

BOARDROOM: 18 PAX
THEATRE: 20 PAX
CLASSROOM: 9 PAX

THE CONFSSIONAL

What's included:

- Tables and chairs
- WIFI
- Cafe views
- A/C
- Optional catering (no outside food)



PRICE GUIDE	
PER HOUR (1 HR MIN)	\$28
FULL DAY (6 HRS MAX)	\$150
BOOK ME	

THE REVOLUTION

“THE REVOLUTION” PROPER NOUN [THE REV-UH-LU-SHUHN]
A SPACE WHERE THOUGHTS EVOLVE, IDEAS ARE BORN AND HISTORY IS MADE

Let's get down to business. Radiating entrepreneurial vibes, I'm your private connection to the corporate world, served with a side of barista-made coffee or any other hospitality your heart desires. With enough comfort and style for an executive team, I'm a secluded respite for high-level discussions and presentations; your tricks of the trade are safe with me. I lend myself to suits, but also smocks - my thirst for learning means I thrive on tactile workshops and dreaming sessions. My furniture can change from board meeting, to classroom, to theatre style. Steve Jobs founded Apple in his garage, what will you create within my walls?



I'M READY FOR YOUR...

CONFERENCE CALL
BUSINESS MEETING
WORKSHOP
PRESENTATION

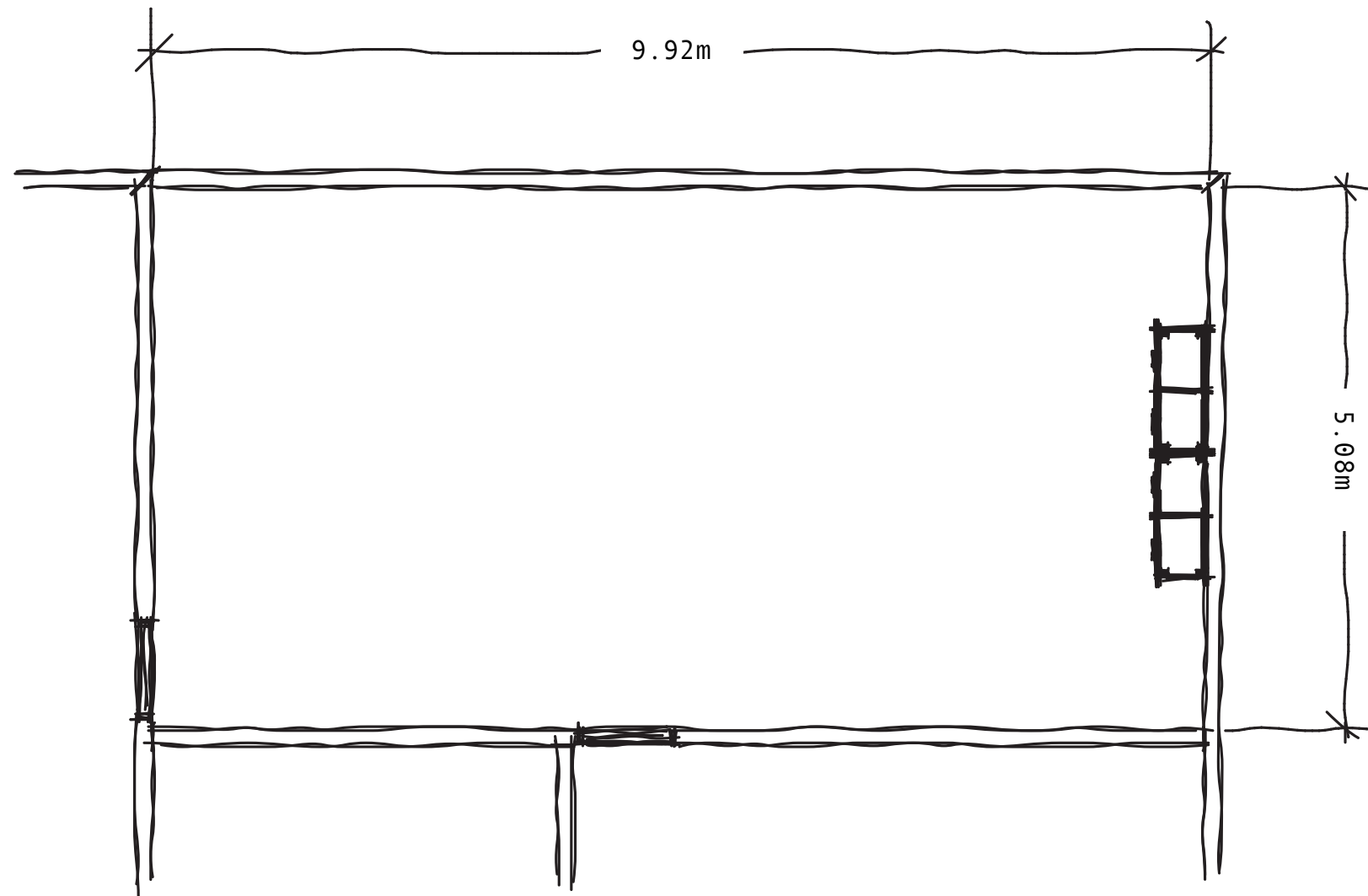
BREAKOUT SESSION
SMALL TRAINING SESSION
STUDY GROUP
OR ANYTHING ELSE...

CAPACITY...

BOARDROOM: 21 PAX
THEATRE: 52 PAX

CLASSROOM: 24 PAX
COCKTAIL: 60 PAX

THE REVOLUTION



What's included:

- Tables and chairs
- A wall mounted 65" LCD screen with built in speakers
- HDMI connection
- Whiteboard and whiteboard markers
- WIFI
- A/C
- Optional catering (no outside food)

PRICE GUIDE	
PER HOUR (1 HR MIN)	\$55
FULL DAY (6 HRS MAX)	\$280
BOOK ME	

ONE FOR THE GEEKS*

AUDIO VISUAL NOTES BELOW ...

The Spire and The Enlightenment hire fee includes a one hour meet and greet with our in-house tech. If you require a tech for the duration of your event, we charge \$82.50 p/h.

A rigger can be organised for you for a fee of \$99 p/h.

If you would like to bring in your preferred AV supplier, not a problem. Note that our in-house tech is still required on site, at a cost of \$82.50 p/h.

AV EQUIPMENT FOR HIRE ...

- Data Projector (high definition)
- Lumen 10000 Projector (super high definition)
- 4m wide Roll Down Screen
- Wireless Microphones
- Click [here](#) to see our list of extensive AV capabilities

*PEOPLE COOLER THAN US

WE THOUGHT YOU'D NEVER ASK...

FAQ

DO YOU HAVE CHAIRS? DESKS? TABLES?

We sure do! We have a whole lot of furniture within the spire for hire - click [here](#) to find out more.

I LOVE YOUR CAFE FURNITURE, CAN I USE THAT?

We know you do. If you've hired the cafe space (The Enlightenment) you're welcome to use any furniture from our cafe - after 5pm from Monday-Friday and after 2pm on Saturday and Sunday.

WHEN CAN I SET UP MY EVENT, AND WHEN DO I HAVE TO LEAVE?

We're pretty flexible around bump in and out, depending on what other shindigs are booked in. We do have one definite rule: all Saturday events must be bumped out that evening (and by evening we mean 2am).

CAN I BYO?

You sure can! We aren't a licensed venue, so you can bring as many or as little bevies as you wish. Fun fact: Dan Murphy's is right across the road, perfect to click and collect ice-cold drinks 45 minutes before guests arrive. If you'd like to hand responsibility over to us, we can discuss the fun topic of temporary licensing.

CAN I USE YOUR KITCHEN?

To cook? No. To store food before serving? Sure thing. If you're a professional chef/catering company, we can talk it through. Our staff can assist with manning our 3 gr coffee machine, turbochef oven, sandwich press, 2 x induction cook top, commercial microwave, caterers fridge 600l.

JUST A BIT MORE...

FAQ

MY FRIEND HAD SECURITY AT HER EVENT, SHOULD I?

Some events may require security, good thinking, friend! Our qualified security rate is \$40 per hour, 4 hour minimum.

ANYTHING ELSE I SHOULD KNOW ABOUT?

You can rename our WIFI network.
We have five female toilets, one Ambulant, two male (+3 Urinal).

ARE YOU WORTH THE TREK TO MIDLAND?

Do you even have to ask?

HOLD UP. HOW DO I GET THERE?

Roll in with your homies in just 30 minutes from the CBD, via Lord Street and Guilford Road. If public transport is more your style, you can hop on the Midland Line and be with us in the same amount of time.

If your guests are planning a quiet one, we have 19 car bays, one ACROD bay and ample free 2-hour street parking. There's also another thousand car parks at the Midland Train Station, if you're up for the 60 second walk between us. If your guests do have brewksies on their mind - rideshares average out to \$35 one-way from the CBD.

PERTH

WHERE IT'S POPPIN'

SO, WHAT NEXT?

THE CONFESSIONAL + THE REVOLUTION;

- 1 Book online [here](#)
- 2 Get ready to party

THE SPIRE + THE ENLIGHTENMENT;

- 1 [Email](#) and request a date
- 2 Book a site visit
- 3 Complete a booking form
- 4 Secure your booking with ca\$hola
- 5 Get ready to party

In need of professional event management? Sling us a message [here](#).

READY TO PARTY?



HIT US UP, HOMIES
WE'RE READY TO HELP

EST 2015
CROOKED
spire